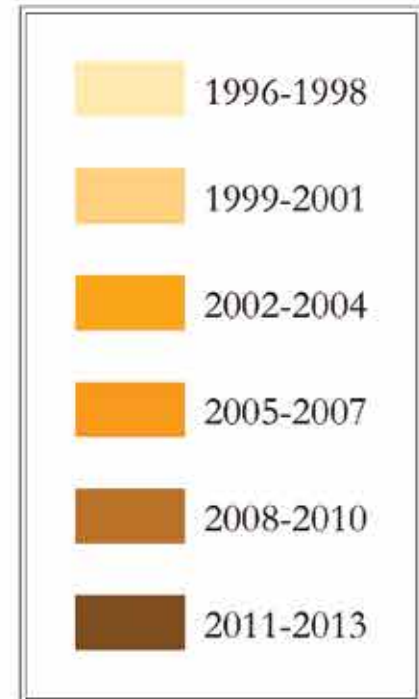
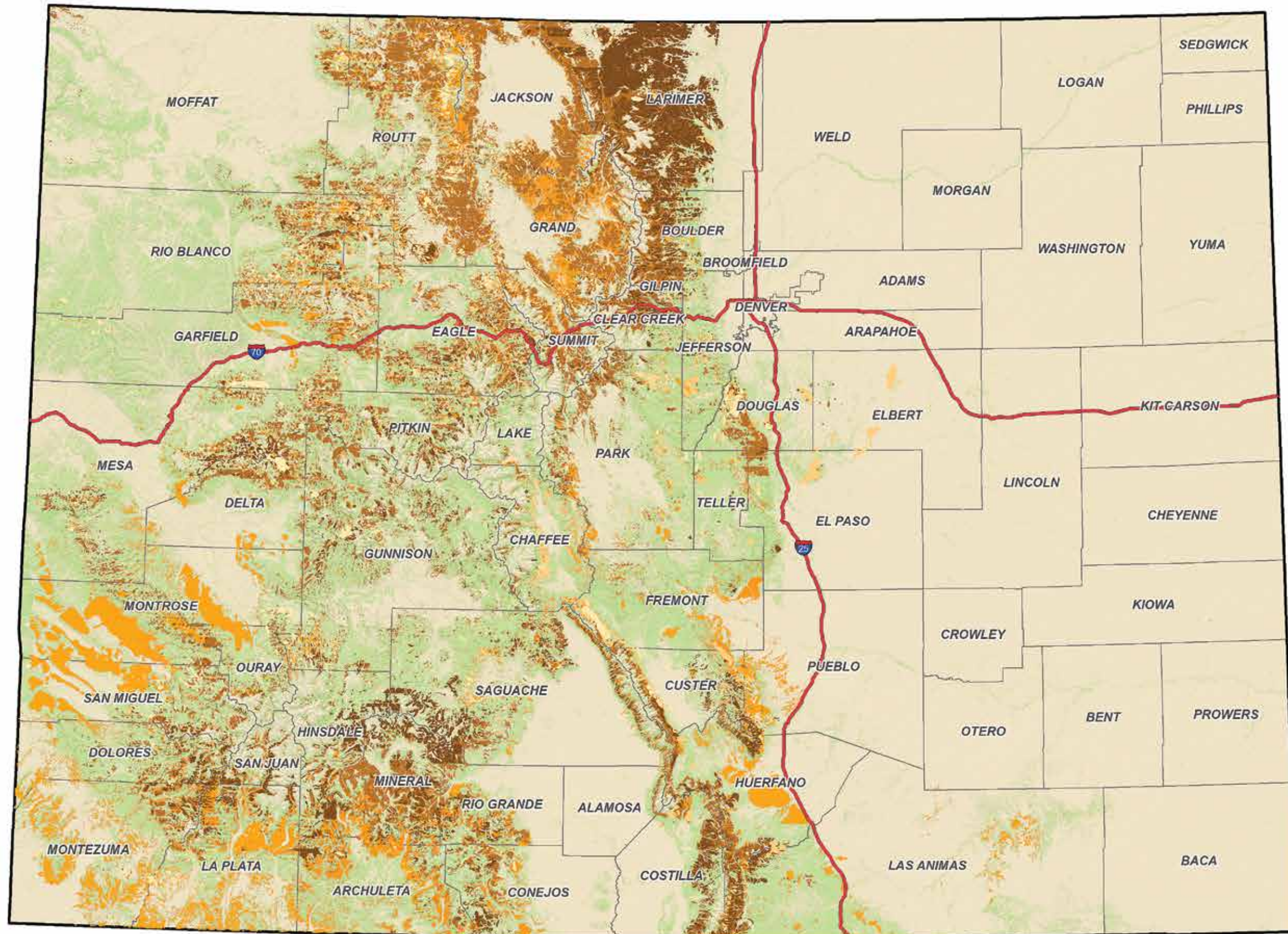


# Forest Insect and Disease Progression in Colorado, 1996 - 2013



## Aerial Survey Data

Due to the nature of aerial surveys, the data on this map only provide rough estimates of location, intensity and the resulting trend information for agents detectable from the air. Many of the most destructive diseases are not represented on the map because these agents are not detectable from aerial surveys. The data presented on this map should only be used as an indicator of insect and disease activity, and should be validated on the ground for actual location and causal agent. Shaded areas show locations where tree mortality or defoliation were apparent from the air. Intensity of damage is variable, and not all trees in shaded areas are dead or defoliated.

The insect and disease data represented on this map are available digitally from the USDA Forest Service, Region 2 Forest Health Management group. The cooperators reserve the right to correct, update, modify or replace GIS products. Using this map for purposes other than those for which it was intended may yield inaccurate or misleading results.

Map created December 2013  
 For more information:  
[www.csfs.colostate.edu](http://www.csfs.colostate.edu)  
 ©CSFS

