

Dr. Wei Wang¹, Joshua Salazar², **Hamed Vahabi**¹, Alexandra Joshi-Imre³, Prof. Walter E. Voit^{2,4,5,6}, and Prof. Arun K. Kota^{1,7}

¹Department of Mechanical Engineering, ⁷School of Biomedical Engineering, Colorado State University, Fort Collins, CO 80523

²Department of Mechanical Engineering, ³Center for Engineering Innovation, ⁴Department of Materials Science, ⁵Department of Bioengineering, ⁶Department of Chemistry, The University of Texas at Dallas, Richardson, TX 75080

Introduction

Superomniphobic surfaces are extremely repellent to virtually all liquids—aqueous or organic, acids or bases or solvents, Newtonian/non-Newtonian.

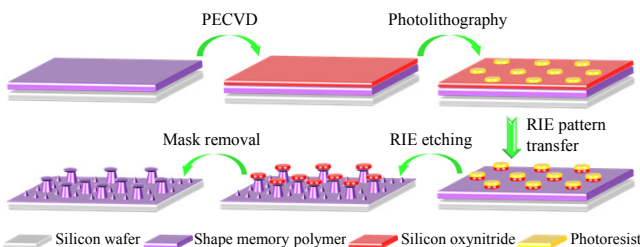
There are no reports that combine superomniphobicity and shape memory effect to systematically design superomniphobic surfaces with metamorphic textures (i.e., textures that transform their morphology in response to an external stimulus).

Wetting Transitions on Superomniphobic Surfaces:

We designed and fabricated the first-ever **Metamorphic Superomniphobic (MorphS) Surfaces** using a thermo-responsive shape memory polymer (SMP).

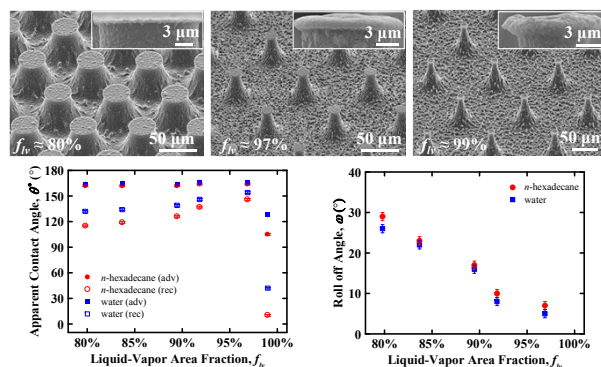
The **wetting transitions** on our MorphS surfaces are solely due to transformations in morphology of the texture.

We envision that our robust MorphS surfaces with reversible wetting transitions will have a wide range of applications including **rewritable liquid patterns, controlled drug release systems, liquid-liquid separation membranes, lab-on-a-chip devices, and biosensors.**



1. Deposition of shape memory polymer via spin coating and post-curing.
2. Deposition of silicon oxynitride layer through PECVD.
3. Fabrication of hexagonal patterns of photoresist columns via photolithography.
4. Transfer of the hexagonal patterns into the silicon oxynitride layer via reactive ion etching (RIE).
5. Fabrication of the shape memory polymer pillars using O₂ RIE.
6. Removal of the silicon oxynitride layer using hydrofluoric acid.
7. Modification of the surface chemistry of the shape memory pillars with heptadecafluoro-1,1,2,2-tetrahydrodecyl trichlorosilane

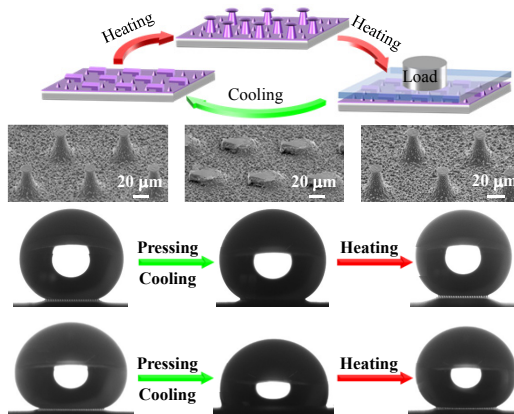
Wettability of MorphS Surfaces



For a surface composed of a hexagonal array of mushroom-like pillars, the apparent contact angle can be determined using the Cassie-Baxter relation as:

$$\cos\theta^* = f_{sl}\cos\theta - f_{lv} \approx \left[\frac{\pi}{2\sqrt{3} \left\{ 1 + \left(\frac{D}{R} \right)^2 \right\}} \right] \cos\theta - \left[1 - \frac{\pi}{2\sqrt{3} \left\{ 1 + \left(\frac{D}{R} \right)^2 \right\}} \right]$$

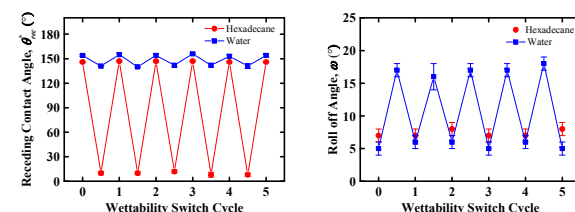
Morphology Transformation of MorphS Surfaces



Transformation: Heat the **mushroom-like pillar texture** above the glass transition temperature ($T_g \approx 60^\circ\text{C}$), press it ($P \approx 10 \text{ MPa}$) and then cool it down to room temperature to obtain the collapsed pillar texture.

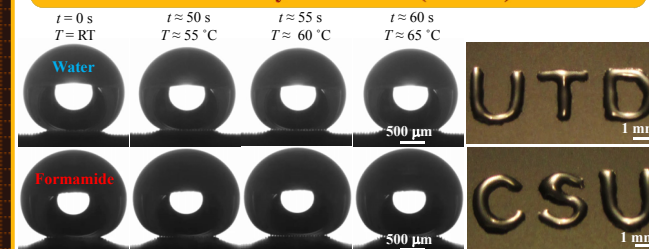
Recovery: Heat the **collapsed pillar texture** above the glass transition temperature to recover the mushroom-like pillar texture.

Cyclic Wettability Transition (Ex Situ)



- The **mushroom-like pillar texture** has re-entrant texture and D/R is very high (4.4). So, droplets of water and n-hexadecane adopt the Cassie-Baxter state (i.e., **superhydrophobic** and **superoleophobic**).
- The **collapsed pillar texture** does not have re-entrant texture and D/R is low (1.6). So, droplets of water adopt the Cassie-Baxter state (i.e., **superhydrophobic**), while droplets of n-hexadecane adopt Wenzel state (i.e., **not superoleophobic**).

Wettability Transition (In Situ)



Upon heating the **collapsed pillar texture** while a droplet of **water** ($\gamma_{lv} = 72 \text{ mN m}^{-1}$, $\rho = 1000 \text{ kg m}^{-3}$ and boiling point = 100°C) or a droplet of **formamide** ($\gamma_{lv} = 58.2 \text{ mN m}^{-1}$, $\rho = 1130 \text{ kg m}^{-3}$ and boiling point = 210°C) is in continuous contact with the texture, the morphology transforms into the mushroom-pillar texture which results in an in situ transition of the droplets from a high adhesion Cassie-Baxter state to a low adhesion Cassie-Baxter state.

Publication

Wang, Wei, Joshua Salazar, Hamed Vahabi, Alexandra Joshi-Imre, Walter E. Voit, and Arun K. Kota. "Metamorphic Superomniphobic Surfaces." *Advanced Materials* 2017, 29, 1700295..