



## **Artist Statement**

### **Isabel Cisneros**

In today's society, things are put on the face in the attempt of making one look more beautiful. Facemasks and creams are used to improve skin; make up is utilized to cover up imperfections. My images take that idea to a ridiculous extreme. Not only is my intention to make mockery of this concept, they also embody concepts of mask wearing and ritual. People have always used masks and face paint on the skin for many things from beauty and ceremonial purposes to the concealment of identity. These are the intangible concepts behind the work yet it also simply addresses the physical aspect of appearance and texture of the materials and their effects on the face. My hope is that certain materials can visually make the structure of the face look different; make it appear thinner or wider, longer or shorter. There is juxtaposition between the young and old, some materials can make a younger face appear older. With my images I attempt to tie together societal expectation and historical practices in a way that transcends initial appearances.

	<u>Title</u>	<u>Media</u>	<u>Original Format</u>
<b>Figure 1:</b>	Honey	Photography	Archival Ink Print, 15 x 22
<b>Figure 2:</b>	Chia Seeds	Photography	Archival Ink Print, 15 x 22
<b>Figure 3:</b>	Chocolate	Photography	Archival Ink Print, 15 x 22
<b>Figure 4:</b>	Sugar	Photography	Archival Ink Print, 15 x 22
<b>Figure 5:</b>	Flour	Photography	Archival Ink Print, 15 x 22
<b>Figure 6:</b>	Paint	Photography	Archival Ink Print, 15 x 22
<b>Figure 7:</b>	Wax	Photography	Archival Ink Print, 15 x 22
<b>Figure 8:</b>	Herbs	Photography	Archival Ink Print, 15 x 22
<b>Figure 9:</b>	Paste	Photography	Archival Ink Print, 15 x 22
<b>Figure 10:</b>	Mud	Photography	Archival Ink Print, 15 x 22
<b>Figure 11:</b>	Coffee	Photography	Archival Ink Print, 15 x 22
<b>Figure 12:</b>	Chalk	Photography	Archival Ink Print, 15 x 22
<b>Figure 13:</b>	Foam	Photography	Archival Ink Print, 15 x 22
<b>Figure 14:</b>	Brown Sugar	Photography	Archival Ink Print, 15 x 22
<b>Figure 15:</b>	Cinnamon	Photography	Archival Ink Print, 15 x 22
<b>Figure 16:</b>	Glue	Photography	Archival Ink Print, 15 x 22



**Figure 1: Honey.**



**Figure 2: Chia Seeds.**



**Figure 3: Chocolate.**

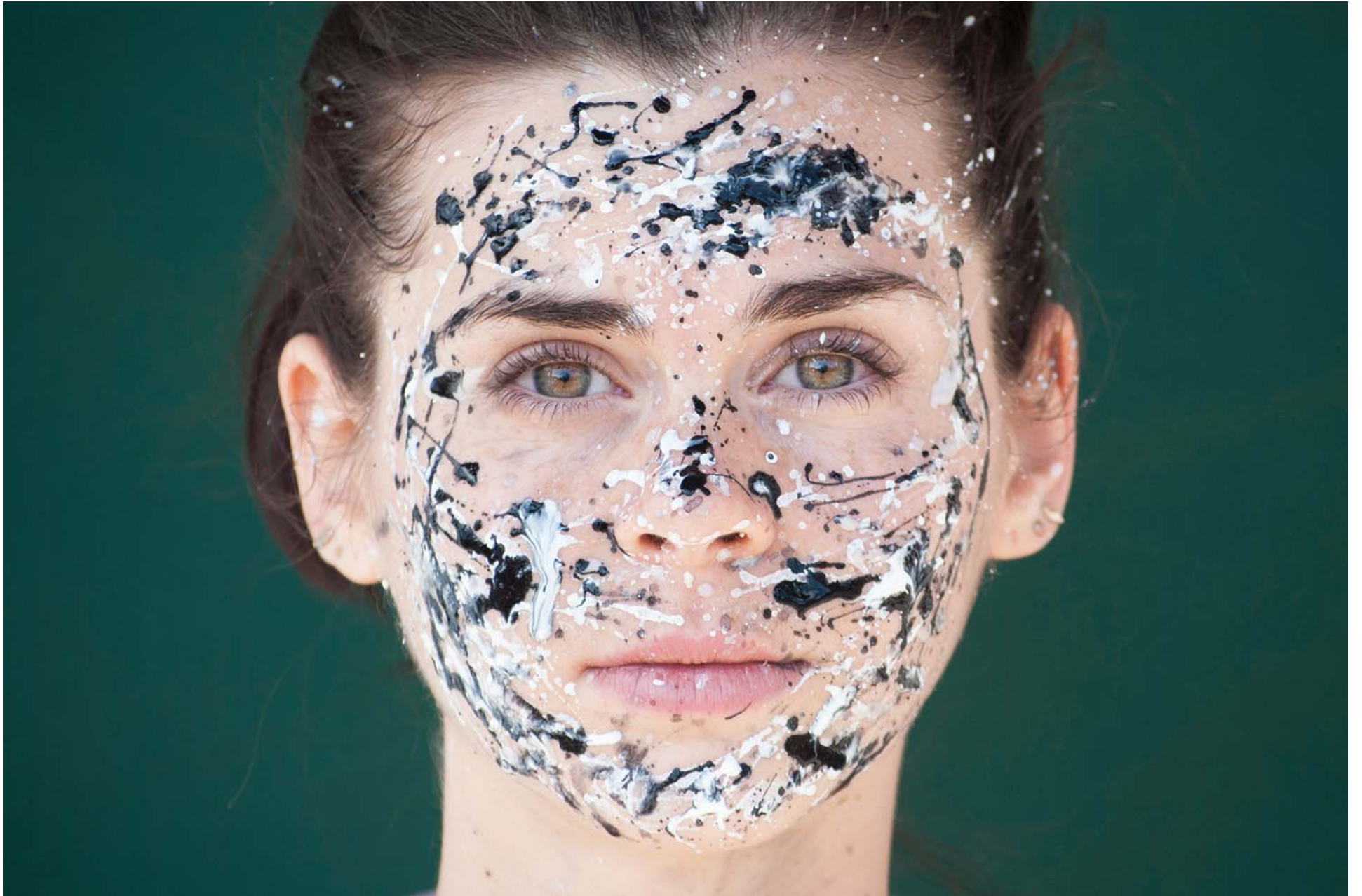


**Figure 4: Sugar.**



**Figure 5: Flour.**





**Figure 6: Paint.**



**Figure 7: Wax.**



**Figure 8: Herbs.**



**Figure 9: Paste.**



Figure 10: Mud.



**Figure 11: Coffee.**



Figure 12: Chalk.



**Figure 13: Foam.**





**Figure 14: Brown Sugar.**



**Figure 15: Cinnamon.**



**Figure 16: Glue.**