

**8th International Congress for Wildlife and Livelihoods
On Private and Communal Lands:
Livestock, Tourism, and Spirit**



United States Department of Agriculture
Animal & Plant Health Inspection Service

Protecting People | Protecting Agriculture | Protecting Wildlife

NWRC Mission

Apply scientific expertise to resolve human-wildlife conflicts while maintaining the quality of the environment shared with wildlife



Agriculture & Resource Protection

- Aviation Safety
- Feedlots & Dairies
- Sunflower & Rice
- Timber & Horticulture
- Pacific Rim Biosecurity
- Livestock/predation

Technology Development

- Contraceptives
- Chemistry
- Genetics
- Toxicology

Wildlife Diseases

- Cattle Fever Tick
- Pseudorabies
- Rabies
- bovine TB
- Type A Influenzas
- AMR Bacteria
- CWD

Invasive Species

- Feral Swine
- Starlings
- Rodents
- Brown Tree Snakes


National Wildlife Disease Surveillance Program

- Tissue Archives
- 23 wildlife diseases of high concern
- National surveillance network
- Strategic international collaborations

NWRC

**1842
Martin v. Waddell**

**Supreme Court Ruling Establishing
Public Trust Doctrine**



NWRC

Tragedy of the Commons

Unregulated resource belonging to everyone

Are valued by no one

NWRC

Tragedy of the Commons



Tragedy of the Commons



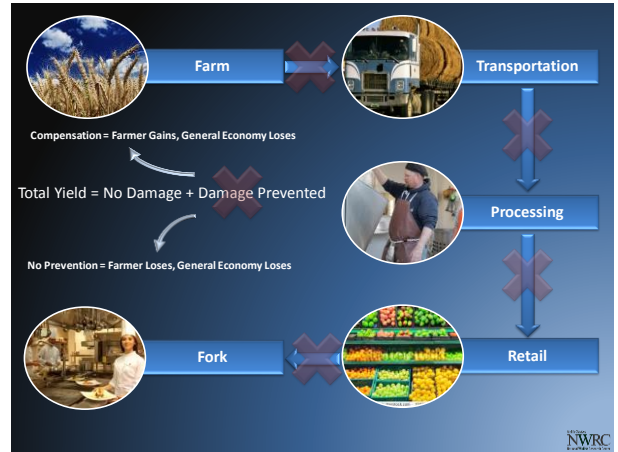
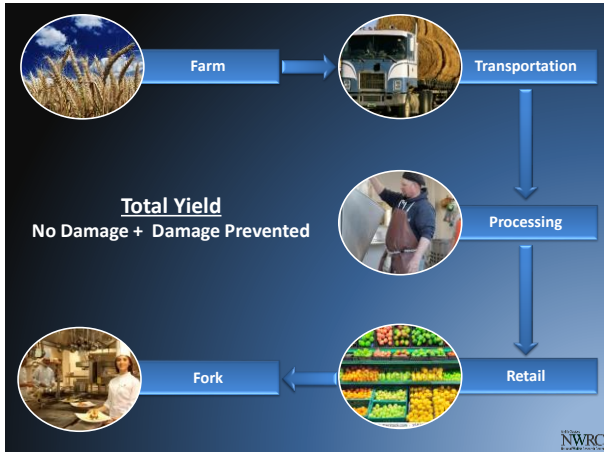
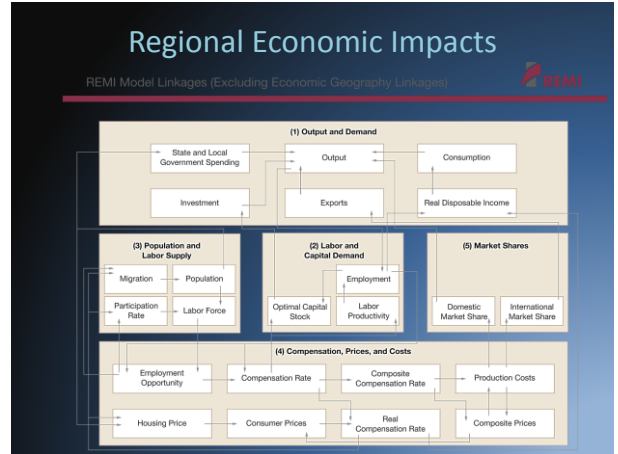
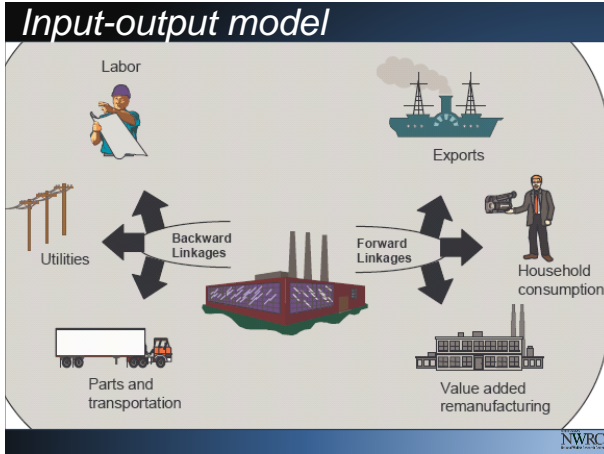
North American Conservation Model Early 20th Century

Principals

- Wildlife is held in the Public Trust
- Prohibition on commerce of dead wildlife
- Democratic rule of law
- Hunting opportunity for all
- Non-frivolous use
- International resources
- Scientific management

Issue

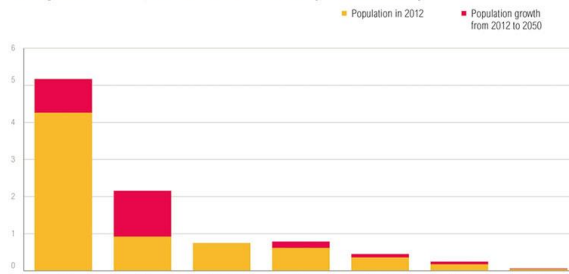
**If wildlife is held to be a public trust
Who is responsible for damages caused
by wildlife**



Challenges



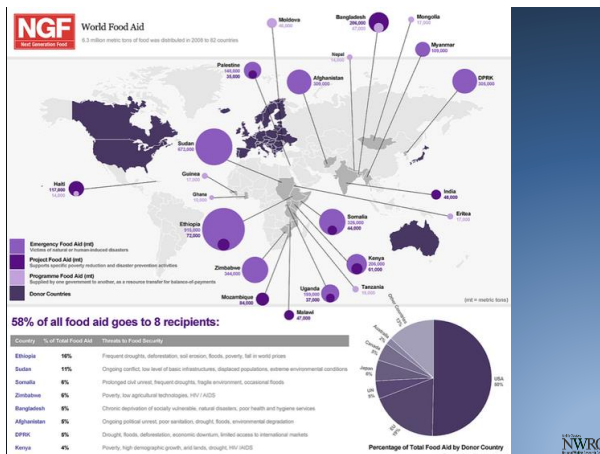
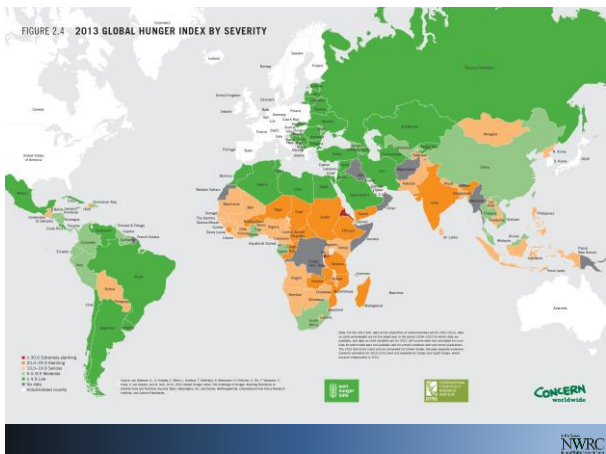
Projected Population Growth (in billions)

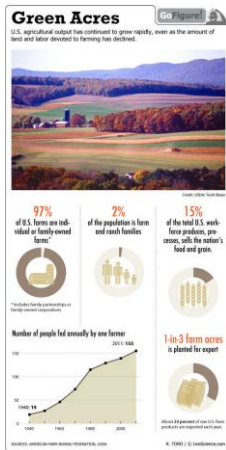
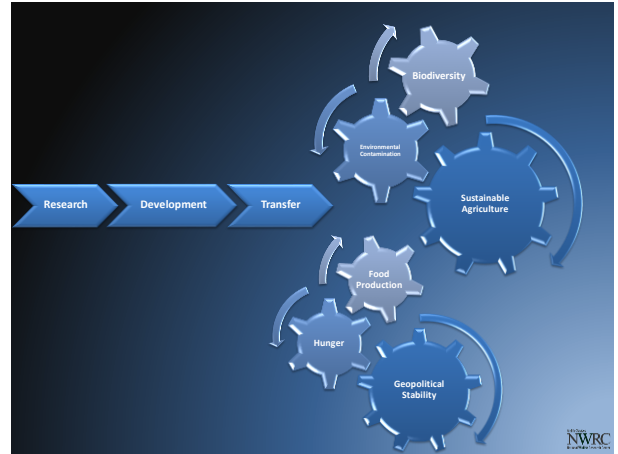


Note: "SSA" = Sub-Saharan Africa, including Sudan. "LAC" = Latin America and Caribbean. "N America" = North America. "N Africa" = Rest of Africa.

 WORLD RESOURCES INSTITUTE

Sources: <http://ow.ly/rp1fMN>

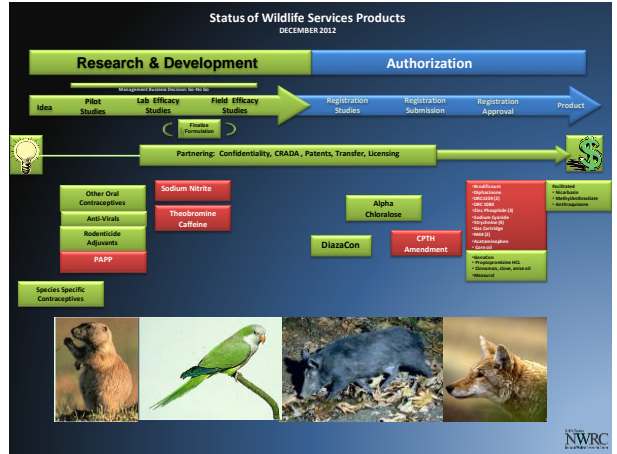




Need

- Better damage assessments
- Better understanding of ecological services
- Better mitigation options

- ### Agriculture & Resource Protection
- Aviation Safety
 - Feedlots & Dairies
 - Sunflower & Rice
 - Timber & Horticulture
 - Pacific Rim Biosecurity
 - Livestock/predation
- ### Technology Development
- Contraceptives
 - Chemistry
 - Genetics
 - Toxicology
- ### Wildlife Diseases
- Cattle Fever Tick
 - Pseudorabies
 - Rabies
 - bovine TB
 - Type A Influenzas
 - AMR Bacteria
 - CWD
- ### Invasive Species
- Feral Swine
 - Starlings
 - Rodents
 - Brown Tree Snakes
- ### National Wildlife Disease Surveillance Program
- Tissue Archives
 - 23 wildlife diseases of high concern
 - National surveillance network
 - Strategic international collaborations
- NWRC Mission**
- Apply scientific expertise to resolve human-wildlife conflicts while maintaining the quality of the environment shared with wildlife*
-

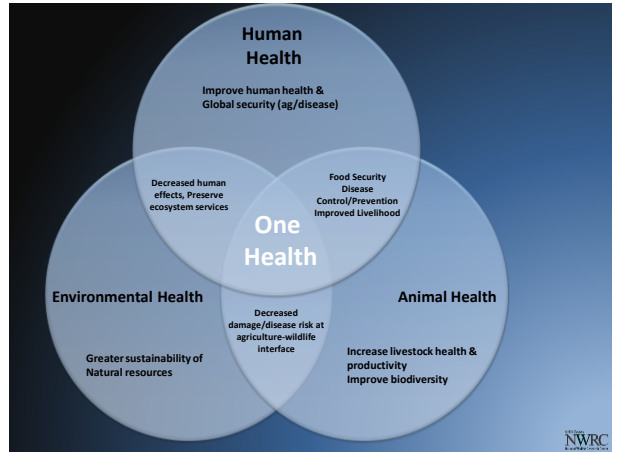


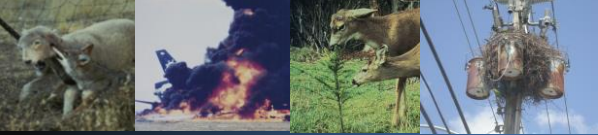
Economic Impacts of Invasive Species

United States (Pimentel et al. 2010)


- \$ 19 B Rats
- \$ 17 B Feral cats
- \$ 14 B Livestock diseases
- \$ 1 B Pigeons
- \$ 800 M Starlings
- \$ 800 M Feral swine
- \$ 620 M Feral dogs
- \$ 50 M Mongoose
- \$ 5 M Feral horses

NWRC





If the only tool you have is a hammer, you tend to see every problem as a nail
---Abraham Maslow



NWRC
NORTHWESTERN RESOURCE CENTER